



From Adversity to Hope
Meeting the moment. Changing the future.

FY25

ANNUAL

REPORT

JULY 1, 2024 - JUNE 30, 2025



What's Inside?

CEO's Message	03	Advancing Care	09
Board of Director's Message	04	Hope Grows in Community	10
Financial Highlights	05	Trusted Community Partner	11
Impact Snapshot	06	Voices of Hope	12
Understanding the Adversity	07	Rooted in Purpose	13
Meeting Adversity with Action	08	Get Help, Give Help	14
		Reach out	15



CEO's Message

A Message of Growth & Momentum

Every year, our annual report offers a chance to reflect on where we have been. This year, it also invites us to consider where we are going — and how we are evolving to meet the moment.

Across the behavioral health landscape, needs are becoming more complex. Communities are facing a rapidly changing drug supply, increasing mental health challenges, workforce pressures, and growing demand for integrated, person-centered care. These realities require organizations that are willing not only to respond, but to adapt and lead.

This year's report reflects not only what we accomplished — but how Gaudenzia is evolving to meet a rapidly changing behavioral health landscape.

Throughout FY25, our teams delivered compassionate, evidence-based care to thousands of individuals across our regions while strengthening the systems that make that care possible. From our work at Riverview Wellness Village — where housing, treatment, medical care, and recovery support come together in one coordinated ecosystem — to the release of our Frontline Report, which elevates real-time data and lived experience to inform broader conversations in the field, we are advancing integrated solutions that extend beyond traditional program models.

None of this work happens without people.

Every milestone in these pages reflects the dedication of our staff, the resilience of those we serve, and the trust placed in us by our partners and communities. Together, we are building systems that recognize recovery not as a single moment, but as an ongoing journey supported by compassion, science, and collaboration.

As we look ahead, we remain committed to meeting adversity with action — strengthening access, advancing integrated care, and ensuring that hope is not just an idea, but a reality experienced every day.

Thank you for being part of this journey.

Warmly, In Service,

Deja Gilbert, PhD, LMHC, LPC, FACHE
President & Chief Executive Officer, Gaudenzia



A Message From Our Board of Directors

Guided by Purpose, Positioned for the Future

On behalf of the Board of Directors, we are honored to share this year's annual report — a reflection of meaningful progress and continued evolution.

At a time when behavioral health systems nationwide face growing complexity, Gaudenzia continues to demonstrate resilience, adaptability, and steadfast mission-driven leadership. Throughout FY25, the organization strengthened its impact while advancing innovative approaches to meet emerging needs.

The Board is especially proud of Gaudenzia's focus on integrated models of care and collaborative partnerships — initiatives that expand access, improve outcomes, and create new pathways toward stability and recovery.

As stewards of the organization's long-term vision, we remain committed to strong governance, financial sustainability, and strategic alignment with the evolving needs of the communities Gaudenzia serves.

The progress reflected in these pages represents a collective effort — from leadership and staff to partners, donors, and supporters — *all working together to build systems that truly support people.*

We extend our deepest appreciation to the entire Gaudenzia team for their dedication and forward-looking leadership.

Together, we look ahead with confidence, knowing that Gaudenzia's mission remains both urgent and essential — and that its future is grounded in purpose, innovation, and hope.

Seth Zuckerman *Carly Meyer Bentley*



**Seth
Zuckerman**
Chairperson,
Gaudenzia, Inc.



**Carly Meyer
Bentley**
Chairperson,
Gaudenzia
Foundation

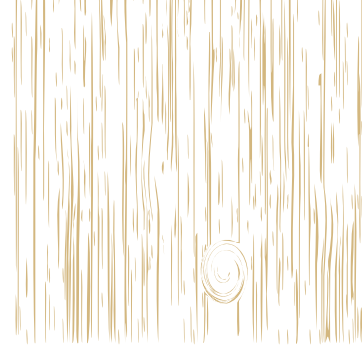
Gaudenzia, Inc. BOD FY 25

Seth Zuckerman, Chairperson	Emily Loscalzo, PsyD, MAC, NCSE
Matt Plevelich, Treasurer	Gavin Pommernelle
Alex Cameron	Jeannine Peterson
Pat Ciarrocchi, Secretary	David Siegel, PsyD
Andrew Harron, PsyD	Jeffrey Shaw
Tracy Gill, MLA	Ned Spells, JD
Cathy Imburgia	Jerry Stahler, PhD
Eric Lorber, JD	Karen Paul Zimmer, MD, MPH, FAAP

Gaudenzia Foundation BOD FY 25

Carly Meyer Bentley, Chairperson
Andrew Olsen, CFA, Treasurer
Michelle Berkoben, CPA, Interim Secretary
Noel Eisenstat
Faith Gibson Hubbard, PhD
Vickie Davis Griffiths
Kim Koslow, LMHC, MCAP, CTT, BCPC, CAI

Financials

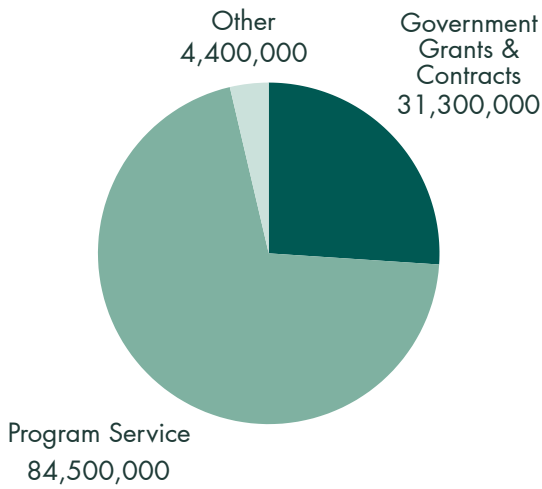


Fueling the Mission

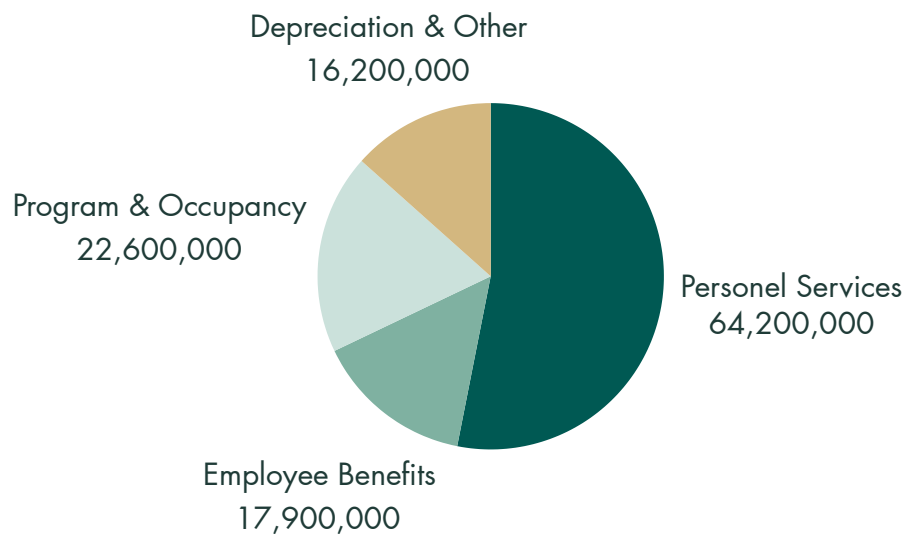
At Gaudenzia, every dollar entrusted to us is an investment in recovery, resilience, and lasting impact. Our financial stewardship in Fiscal Year 2025 reflected both stability and strategic investment—ensuring that resources are directed where they matter most: toward life-saving care, housing stability, and community-based support.

Notably, the majority of our expenditures support the dedicated personnel and specialists who power our programs—underscoring Gaudenzia’s deep commitment to the people behind the mission.

FY25 REVENUE



FY25 EXPENDITURES

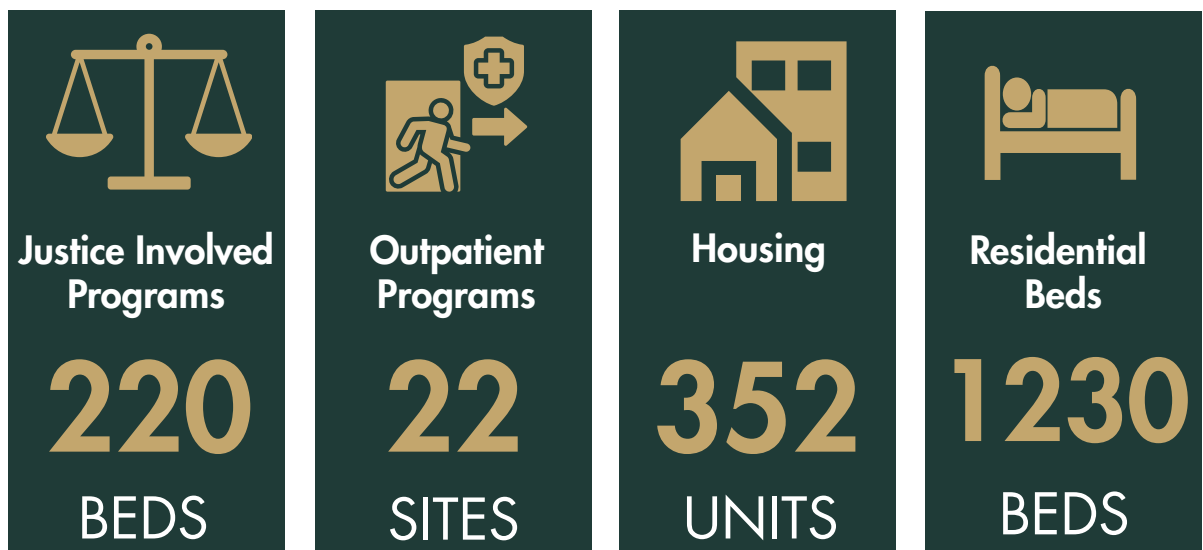


The figures above represent consolidated totals across Gaudenzia, Inc. and affiliated entities, including the Gaudenzia Foundation. Our blended funding model—drawing from public contracts, earned revenue, and private philanthropy—makes it possible to meet the needs of more than 20,000 individuals in FY25 across our behavioral health continuum—through our programs, and through engagement in harm reduction outreach and stabilization services.

Impact Snapshot

By the Numbers

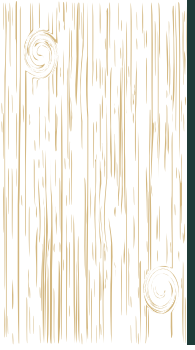
For more than 57 years, Gaudenzia has partnered with individuals, families, and communities to support lasting recovery. Working alongside a network of clinical, community, and system partners, we create pathways that address the full spectrum of recovery—from stabilization through long-term reintegration. Our commitment to accessible, evidence-based care continues to expand opportunity, strengthen outcomes, and help more people build sustainable futures.



Figures represent a point-in-time a snapshot at the close of FY25. Gaudenzia's programs and capacities are regularly adjusted to meet evolving community needs.

Understanding Adversity

Reality behind the numbers



The Landscape Our Clients Face

Across the behavioral health field, providers are navigating rising complexity:

- shifting drug supply trends
- increasing mental health acuity
- workforce pressures
- funding volatility
- growing demand for integrated care

These challenges are not temporary — they represent structural changes shaping how care must evolve.

Our Response

Rather than reacting program by program, Gaudenzia is advancing coordinated, whole-person care models that integrate treatment, housing, medical services, and community partnership — exemplified by initiatives like Riverview Wellness Village and reflected in insights from our Frontline Report.



When a client walks into one of our programs, they're often facing more than addiction—they're facing trauma, housing loss, grief, and medical complexity. Meeting that moment takes more than compassion. It takes coordination.
— Gaudenzia Frontline Staff

Meeting Adversity with Action

Beyond Service: Leading With Data



Leading from the Frontline: Shaping the Future of Care

In early 2026, Gaudenzia released its [FY2025 Frontline Report](#)—a data-informed analysis of behavioral health trends across Pennsylvania, Maryland, Delaware, and Washington, D.C.

Drawing from thousands of real-time service interactions, the report examines shifting drug patterns, the increasing complexity of co-occurring mental health needs, transitions across levels of care, and growing workforce pressures in the field.

Key insights included:

- **Polysubstance Use is the Norm, Not the Exception.** Nearly half of all treatment admissions involved more than one substance—with fentanyl, alcohol, and xylazine topping the list.
- **Mental Health Needs Are Intensifying.** Over 70% of residential clients presented with co-occurring substance use and mental health conditions.
- **Recovery Requires Stability.** Clients who successfully transitioned to outpatient or housing support overwhelmingly had stable access to care and recovery capital.

But the Frontline Report does more than analyze data—it elevates the lived experiences of clients and the insight of frontline professionals.

Through transparency, measurement, and continuous learning, Gaudenzia is not only delivering care—we are helping shape the future of behavioral health.

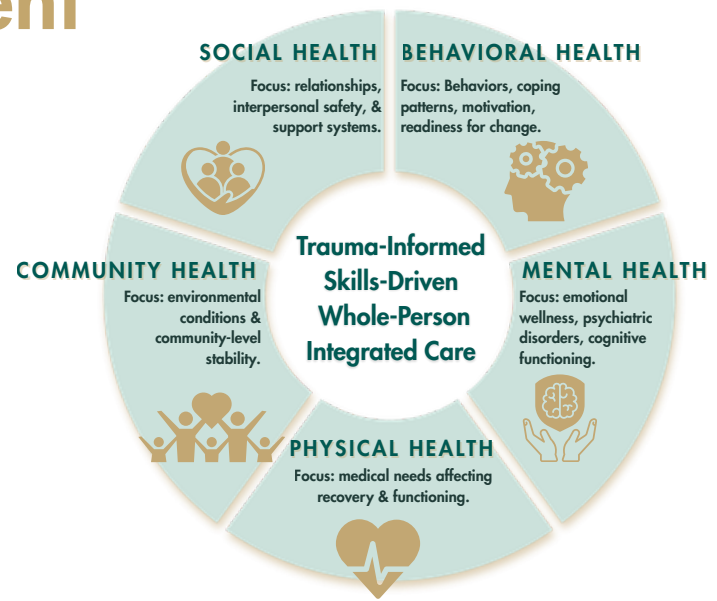
This report captures not only the scope and complexity of the needs we see—but the strength of our collective response. – President & CEO Dr. Deja Gilbert

Advancing Care

The Future of Treatment

“This model empowers teams to balance structure and compassion while delivering the right care at the right time. It’s how we support stability, growth, and long-term recovery.”

— Trish Caldwell, Chief Clinical Officer



How We Deliver Care Today

In recent years, Gaudenzia has continued evolving how we deliver care—building on our legacy while adapting to the complex realities facing individuals and families today.

Beginning in 2020, the organization initiated a strategic shift from a traditional Therapeutic Community model toward a more integrated, whole-person framework designed to meet people where they are. This evolution reflects advances in behavioral health science, trauma-informed practice, and the growing need for coordinated care across medical, clinical, and recovery support disciplines.

Today, Gaudenzia’s integrated treatment model brings together evidence-based clinical practices, medication-assisted treatment, and holistic wellness supports into one coordinated system. Rather than working in silos, interdisciplinary teams collaborate to ensure individuals receive *the right care, at the right level, at the right time*—from stabilization through long-term recovery.

This approach honors the strengths of Gaudenzia’s history while embracing innovation grounded in research, compassion, and real-world experience. By combining structure with flexibility and science with human connection, we continue shaping a model of care designed for lasting recovery.

Whole-Person Integrated Care at a Glance

- Medical Excellence (MAT integrated across continuum)
- Evidence-Based Skills-Driven Treatment
- Whole-Person Wellness & Community Connection

Hope Grows in Community

Investing in Impact, Together



Expanding Our Circle: Launching the Alumni Association

In Fiscal Year 2025, Gaudenzia formally relaunched its Alumni Association—an initiative rooted in a simple belief: *recovery doesn't end at discharge*.

Since inception, the Alumni Association has connected individuals across our footprint through in-person and virtual programming, expanding peer-based recovery engagement.

For decades, individuals have walked through Gaudenzia's doors seeking treatment. Now, we are creating a structured pathway for continued connection—ensuring that support, encouragement, and community remain accessible long after formal services conclude.

The Alumni Association provides opportunities for:

- Ongoing peer connection and recovery support
- Engagement through events and volunteer activities
- Accountability networks and relapse prevention check-ins
- Leadership development and storytelling

More than a program, the Alumni Association reflects Gaudenzia's commitment to lifelong recovery. It transforms former clients into ambassadors, mentors, and community builders—strengthening the continuum of care from within.

When individuals return not as patients, but as leaders and voices of hope, the impact extends far beyond our walls.

Hope grows in community. And through our Alumni Association, that community continues to expand.



Remember to stay in the moment. You've come a long way, and you possess the tools to keep moving forward. Engage in positive self-talk and focus on the rewards recovery has to offer. – Alumni Association Member

Trusted Community Partner

Building Hope Together



Recognized during Philadelphia's State of the City Address for leadership in recovery and homelessness response.

As Gaudenzia continues to deepen partnerships across the region, our work is increasingly recognized at the highest levels of civic leadership.

In December 2025, President & CEO Dr. Deja Gilbert and Eastern Region Executive Director Arthur Fields were invited to join Mayor Cherelle Parker on stage during Philadelphia's *State of the City* address. During the event, Mayor Parker publicly acknowledged Gaudenzia's leadership in addiction treatment and recovery and included our team in a proclamation focused on addressing homelessness and strengthening coordinated care across the city.

While this moment highlights organizational leadership, it ultimately reflects the dedication of teams across Gaudenzia whose daily commitment continues to shape stronger communities and more hopeful futures.

That same spirit of collaboration is powering Riverview Wellness Village, opened in FY25. In partnership with the City of Philadelphia, Gaudenzia is helping build Riverview's unprecedented "Housing Plus" model—an integrated campus that brings together recovery housing, medical care, outpatient treatment, and mental health services. As one of four contracted providers, we deliver safe, recovery-focused housing and daily coaching that supports residents as they rebuild stability and move toward long-term independence.

Voices of Hope

Our Annual Gathering for Recovery Leadership



Our Inaugural Evening of Impact, March 2025

Jayson Williams

2025 Keynote Speaker
Former NBA All-Star & Recovery Advocate

"We are all more than our worst day. We are human. And we are worthy of recovery, of redemption, of hope."

Continuing the Momentum: From Adversity to Hope 2026

This annual gathering reflects Gaudenzia's commitment to leading beyond service—bringing together voices shaping the future of recovery.

Building on the momentum of our inaugural Evening of Impact, Gaudenzia will convene partners, advocates, and community leaders again on April 16, 2026, for our second annual *From Adversity to Hope* event.

This year's keynote speaker, recovery advocate and former MLB All-Star Darryl Strawberry, will share his powerful journey of resilience and redemption.

Together, we continue advancing a future where recovery is visible, celebrated, and supported.



**KEYNOTE
SPEAKER**

**Darryl
Strawberry**

*Celebrate Resilience,
Champion Recovery.*

APRIL 16
GAUDENZIA.ORG/EVENTS

#FROMADVERSITYTOHOPE



Scan to learn more or reserve your seat.

Rooted in Purpose

Beliefs & Services Guiding Our Every Step



We exist to help people heal, thrive, and sustain lifelong recovery — now and into the future.

No matter the circumstance, Gaudenzia works to find a treatment path that's right for each individual.

Whether an individual is navigating substance use disorder, related mental health challenges, or an HIV/AIDS diagnosis, we meet them where they are—and do whatever it takes to help them reclaim their lives.

Mission

Gaudenzia's mission is to promote long-term recovery by providing comprehensive treatment and support to people with substance use disorder, co-occurring mental health disorders, and related conditions, regardless of individual circumstances.

Vision

Gaudenzia's vision is a future where all individuals confronting substance use and mental health challenges find the assistance they need to lead healthier, more fulfilling lives.

Providing a **full continuum of care** across **Pennsylvania, Maryland, Delaware, and Washington, D.C.** with wraparound supports for Mental Health, Peer Recovery, and more:

- Crisis Stabilization & Withdrawal Management
- Residential & Outpatient Treatment
- Programs for Women & Women With Children
- Medication-Assisted Treatment (MAT)
- Recovery Housing & Affordable Housing
- Harm Reduction & Prevention Services
- Services for Justice-Involved Individuals



Treatment & Referral HelpLine

833.976.HELP(4357)

HelpLine@gaudenzia.org
www.gaudenzia.org

Support our mission and help transform lives, families, and communities. Make a gift today at www.gaudenzia.org/give.

*Together, We Grow Hope.
Get Help. Give Help.*

**SCAN
ME!**



Expert Guidance: Our 24/7 HelpLine team connects individuals to treatment tailored to their needs, including residential, outpatient, and recovery support services.

Comprehensive Network: With locations across multiple regions, we ensure access to high-quality care.

Responsive Support: We work quickly to connect individuals with the care they need—because every moment matters.

Collaboration: We value strong partnerships with referral sources to achieve our shared mission of saving lives.

Questions? Feedback?

We'd love to hear from you.

**Contact our Annual Report Helpline at:
888.682.8280**

This dedicated number helps us track the reach and impact of this publication—while connecting you to the same compassionate support you'd expect from our main Helpline.

**More Than Numbers.
This is Our Story—We're Glad You're Part of It.**

Gaudenzia, Inc.

166 W. Main Street | Norristown, PA 19401

PublicRelations@gaudenzia.org

gaudenzia.org

888.682.8280

Your Voice Matters.

Read. Reflect. Reach Out.

We welcome your questions, feedback, or reflections.